

Norms on direct measurement, verification and validation to support the implementation of RENE

The Mexican-Danish Climate Change Mitigation and Energy Program (CCMEP) has supported Mexico in implementation of its climate policy and energy reform. Under the Climate Change component (CC) of the Program, Denmark provided support to SEMARNAT in the development of three legal instruments or norms for each one of the processes on verification, validation and Direct Measurement of CO₂, following the legal dispositions of the National Emissions Registry (RENE).

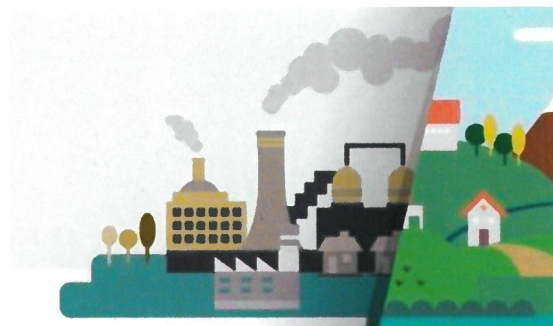
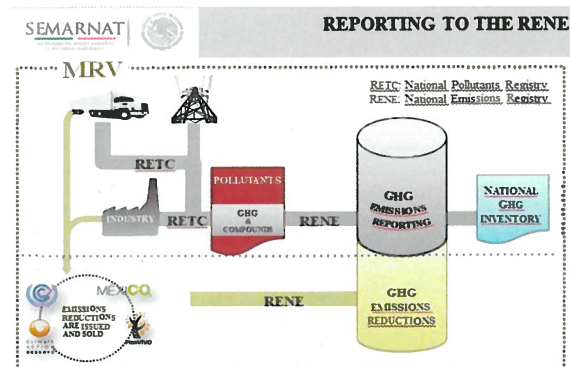
The RENE establishes that the economic sectors must report their direct and indirect emissions from all their facilities surpassing the annual threshold of 25,000 tCO₂e. The reporting sectors are energy, industry, transport, agricultural, waste, commerce and services, and include stationary and mobile sources, as well as electricity and heat consumption. Given the diversity of sectors, subsectors and activities amongst the subjects to report to the RENE, it is necessary to provide an exhaustive set of features defined in a legal instrument or norm that has to be applied in order to carry out the verification of GHG reports and the validation of mitigation projects or activities.

OUTPUTS:

- A report on international best practices;
- A final draft of the Norm on Verification that also includes the development of the procedures and formats regarding the Conflict of Interest Analysis;
- A final draft of the Norm on Validation;
- A final draft of the Norm on Direct Measurement of CO₂;

OUTCOME:

The development of these legal instruments or norms on the processes of Verification, Validation and Direct Measurement of CO₂, and its subsequent entry into force will support Mexico in strengthening transparency, greenhouse gas accounting and its monitoring, reporting and verification scheme required by the General Climate Change Law and international commitments.



For further information contact:
Diana Guzman
diana.guzman@semarnat.gob.mx
or Nethe Veje Laursen nvl@ens.dk